

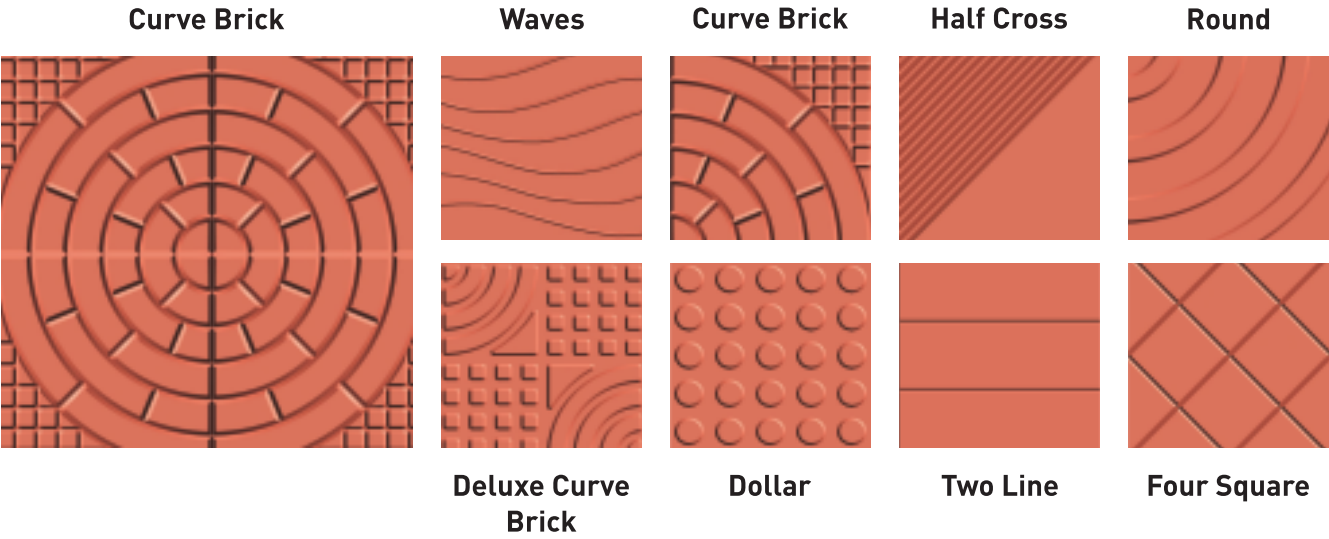


*Tile*  
*your imagination*

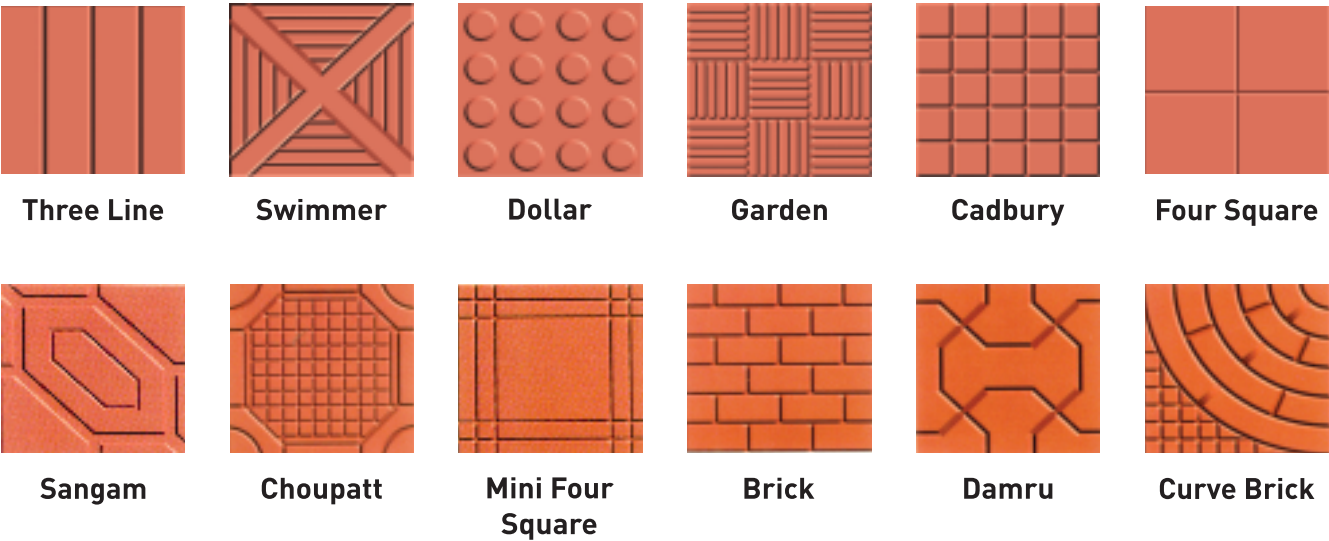


AN ISO 9001 : 2008 Certified Company

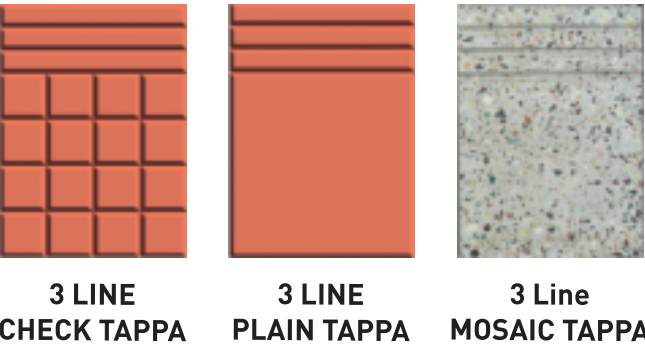
12" X 12" ECONOMY CHECKERED TILES THICKNESS - 25 MM



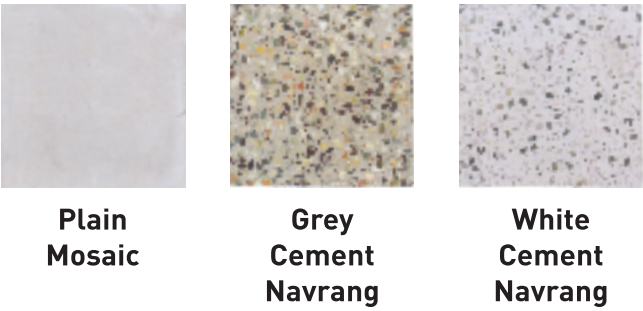
10" X 10" ECONOMY CHECKERED TILES THICKNESS - 20 MM TO 22 MM



available size 11"x 8"



available size 10"x10" & 12"x12"



## ECONOMY & HEAVY DUTY PAVER BLOCK

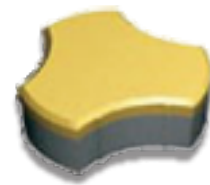


**BRICK - 8"x4"**

**100 Sq. Ft. - 450 pcs.  
Thickness - 60 mm & 80 mm**



**FALCON**  
**100 sq.ft. - 312 pcs.**  
**Thickness - 60 mm & 80 mm**



**COSMIC**  
**100 sq.ft. - 252 pcs.**  
**Thickness - 60 mm**



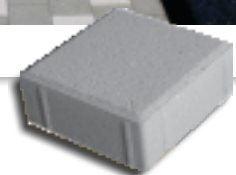
**ZIG - ZAG**

**100 sq.ft. - 288 PCS.  
Thickness - 60 mm & 80 mm**



**SQUARE**

**6"X6" - 400 PCS.  
8"X8" - 225 PCS.  
12"X12" - 100 PCS.  
Thickness - 60 mm & 80 mm**

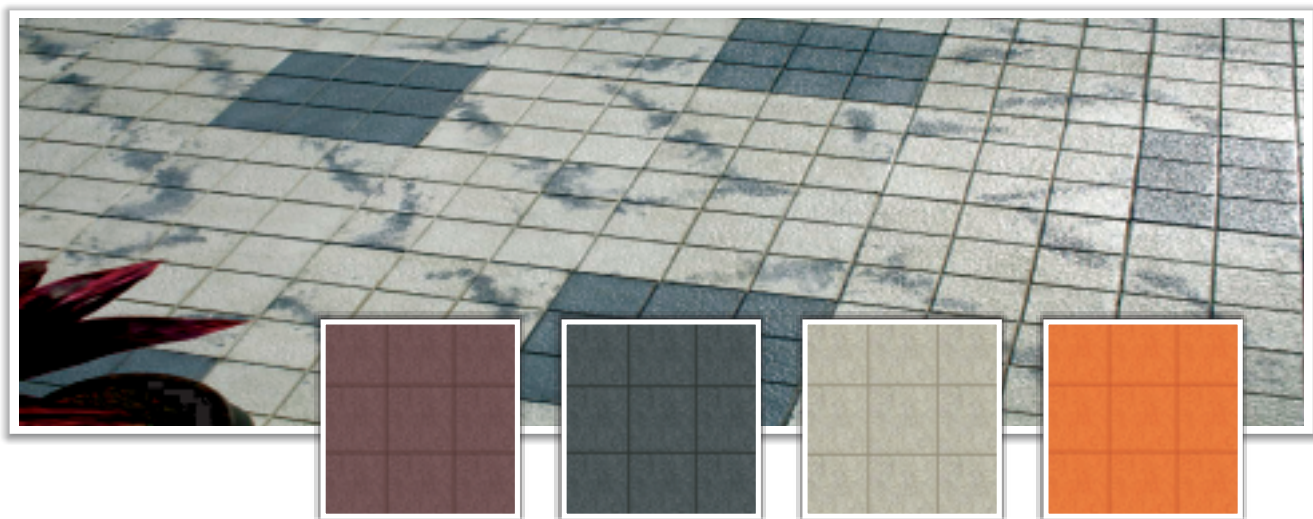




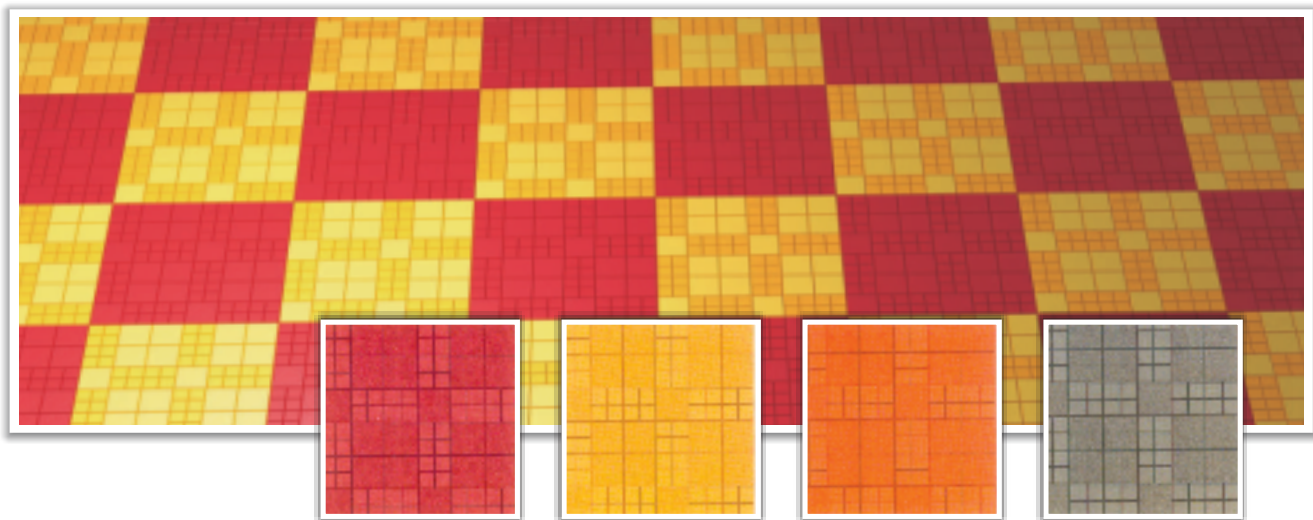
12"X12" Glossy Chequered Tiles Thickness - 25mm



DESIGN - 17 SQUARE

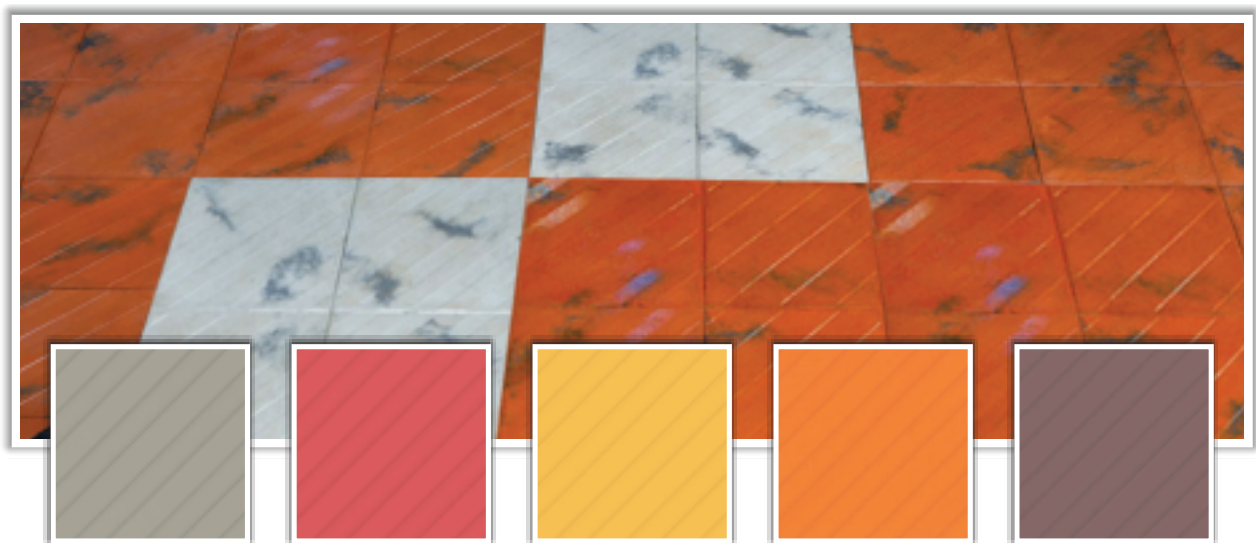


DESIGN - 9 SQUARE

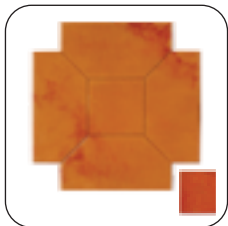


DESIGN - CADBURY

12"X12" Glossy Chequered Tiles Thickness - 25mm



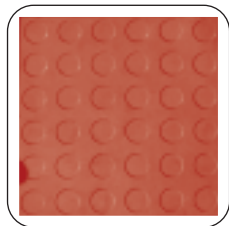
DESIGN - CROSS MATT



Chatura



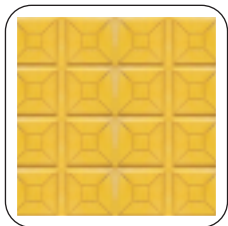
4 Square



Dollar



Capsule



16 Pocket



Brick



Waves



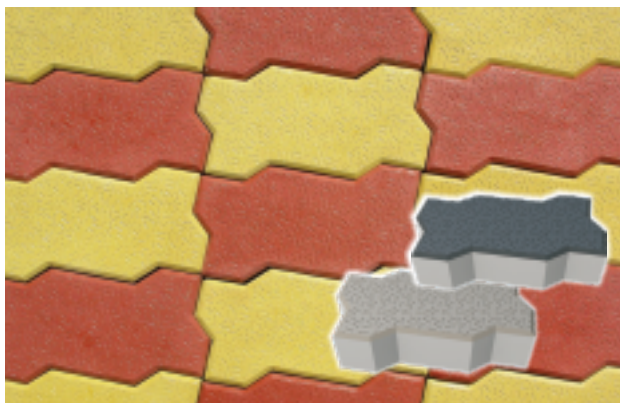
Leaf

DESIGN STONE FINISH 16" X 16" 100 Sq. Ft. - 57 Nos.





**Rubber Mould Glossy Paving Block**



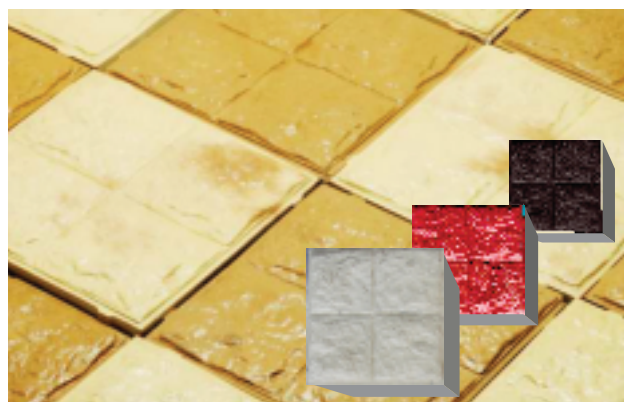
**DESIGN - ZIG ZAG 100 Sq.Ft.- 288 Nos.**  
**Thickness - 60 mm. / 80 mm.**



**DESIGN - FALCON 100 Sq.Ft.- 208 Nos.**  
**Thickness - 60 mm.**



**DESIGN - OLYMPIYA 100 Sq.Ft**  
**256 Nos. Thickness - 60mm. / 25 mm**



**DESIGN - 4 SQUARE STONE**  
**100 Sq. Ft. 225 pcs. Thickness 60 mm**



**DESIGN - COSMIC**  
**100 Sq.Ft.- 185 Nos. Thickness - 60 mm.**

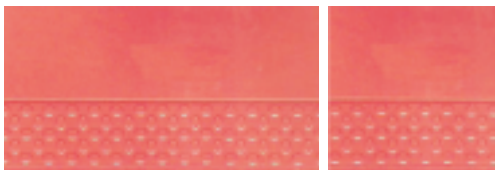


**DESIGN - 10X5**  
**100 Sq.Ft.- 288 Nos. Thickness - 60 mm.**

**10"x5" - 288 pcs. | 5"x5" - 576 pcs.**  
**10"x10" - 144 pcs.**

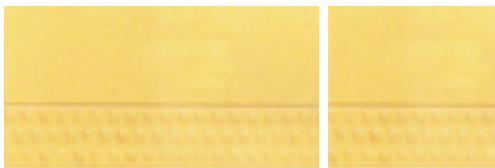


DESIGN - GRASS PAVER 100 Sq.Ft.- 144 Nos. Thickness - 60 mm.



2"x1"

12"x12"

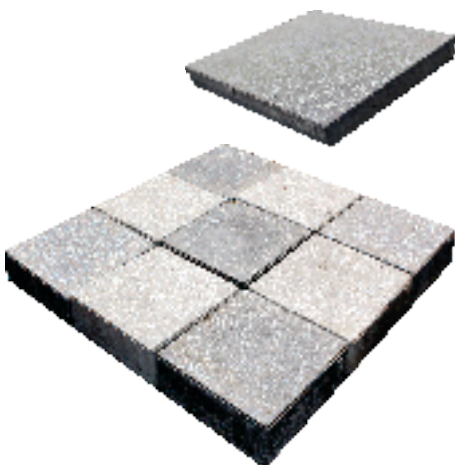


2' X 1' TAPPA, 1' X 1' TAPPA



8"x 8", 8"x 4" 4"x4" GLOSSY PAVING BLOCKS

### SHOT BLAST



#### Size Available

8"x8"

8"x4"

16"x16"

5"x5"

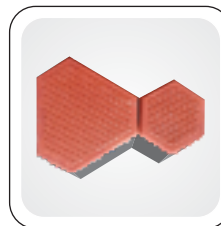
10"x5"

Extra Heavy Duty  
Paving Block

#### 8"x8"



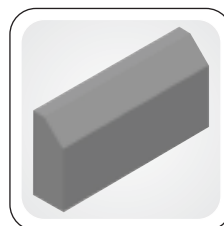
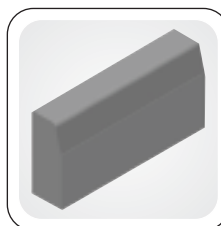
#### Monarch Pyramid



#### Hexagoan



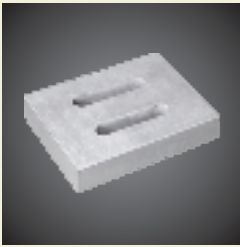
PAVER BLOCKS THICKNESS - 60 MM



#### KERB STONE :

18"x12"x4" | 18"x12"x6" | 18"x12"x8" | 12"x12"x4"

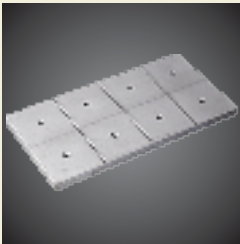
## INFRA PRODUCT



**PERFORATED DRAIN  
Covers (RCC Precast  
Covers)**



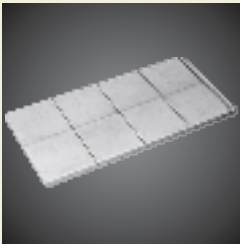
**MILES STONE**



**PERFORATED  
Drain Cover**



**CAR STOPEERS**



**REFLECTIVE  
Drain Cover**



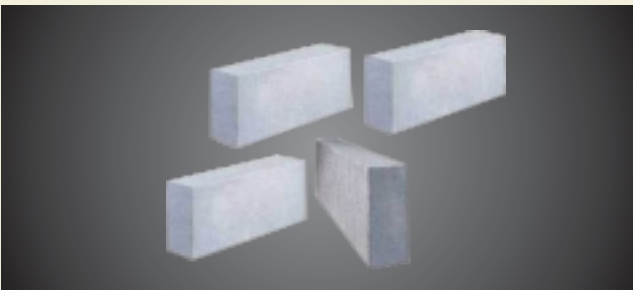
**RCC PIPES  
NP2 Glass  
150 to 1200 mm  
NP3 & NP4 Class  
150 to 1800 mm**



**SQUARE CHAMBER**



**FLY ASH BRICKS**



**CLC / AAC BLOCK**



**PRECAST COMPOUND WALLS**



## INFRA PRODUCT



**RECTANGULAR  
CHAMBERS**



**CRASH BARRIER**



**CIRCULAR  
CHAMBERS**



**HOLLOW  
BLOCKS**



**SEPTIC TANK**



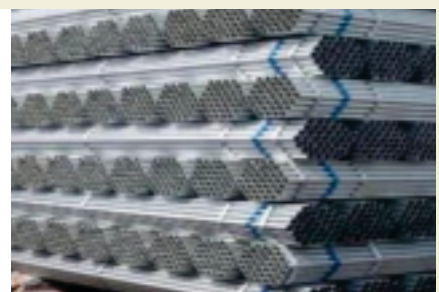
**CABLE COVERS**

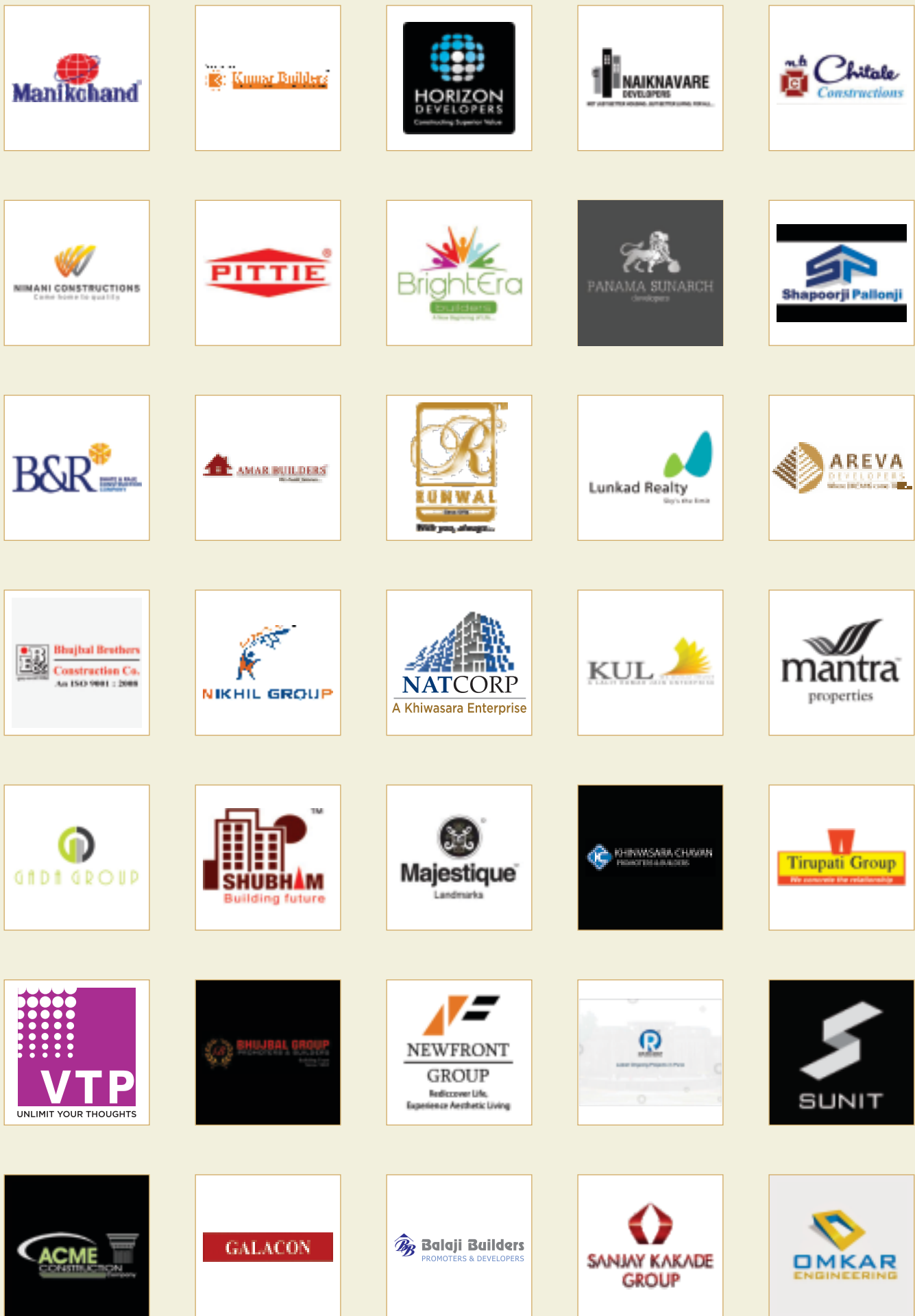


**MS PIPES  
SQUAR, RECTANGLE, ROUND**



**GI PIPES  
SQUAR, RECTANGLE, ROUND**





& A TOTAL OF PRESTIGIOUS 600 SATISFIED CUSTOMERS .....



WIDE VISION ...

**NATRAJ GROUP** A professionally managed family enterprises, primarily engaged in Manufacturing, Construction, Real estate and Chemicals. Founded by late Pravin H. Khiwasara in 1985, through his hard work, perseverance and dedication the business has grown manifolds.

Fuelled by ambition, Niranjan P. Khiwasara & Abhishek P. Khiwasara along with their Team, aim to make **Natraj Group**, the best and the most valuable conglomerate. The group is on the path of untrammelled growth, expansion and consolidation

**MISSION :** To ensure availability of products and achieve consistency in quality, with effective quality management system and also achieve cost competitiveness and focus on overall service to the customers.

Achieve these results through active participation of all employees and management.

**VISION :** Achieve the highest standards in operation by adopting the best business practices. Promote innovation and ensure profitable growth.

To be market leaders & dominant player in all its chosen vertical nationally & internationally.



## NATRAJ GROUP

**Natraj Sales  
Corporation**

BUILDING  
MATERIAL SUPPLIERS

**Hira  
Tiles**

MFG. CEMENT  
PRODUCTS

**Calliber**  
TILES

MFG. CEMENT  
PRODUCTS

**NATCORP**  
A Khiwasara Enterprise

PROMOTERS &  
DEVELOPERS | INFRA

**Catalyst Chemical Industries**

MFG. & SUPPLIER  
OF CHEMICAL

## NATRAJ GROUP

(ESTD 1985)

• AN ISO 9001 : 2008 Certified Company •

NATRAJ SALES CORPORATION : 39/D, 'Santosh Heights', Shankar Sheth Road,  
Opp. Apsara Theater, Pune 411 037. T 020 2644 3366 / 2644 3367. M 98501 20850  
Cell : 95953 26333 | E mail : [hiratiles1985@gmail.com](mailto:hiratiles1985@gmail.com)

[www.hiratiles.net](http://www.hiratiles.net)